

PARTS MANUAL



TrailerBlade™ HD

204000	2
214000	2
204000BLK	3
205000A	3
205000	4
206000	4
Parts Diagram	5

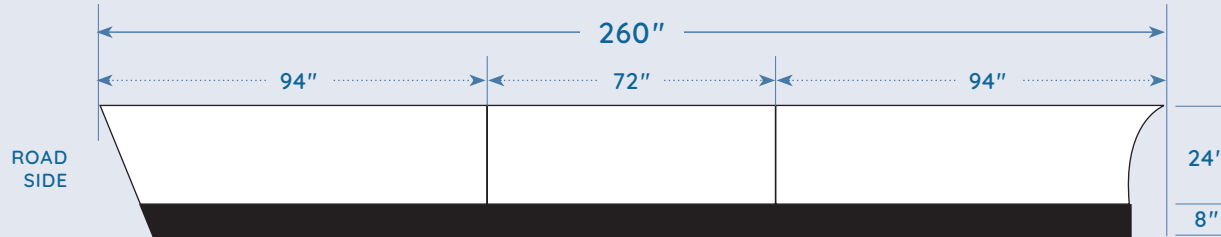
TrailerBlade™ FLEET

404000	6
414000	6
404000BLK	7
406000	7
Parts Diagram	8

Replacement Parts, and Hardware	9
------------------------------------	---

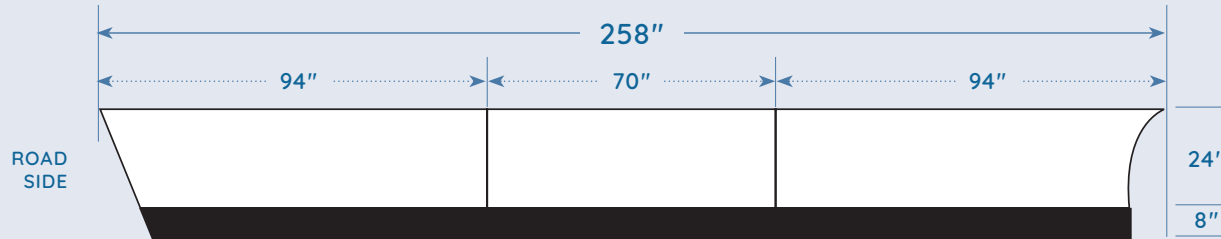
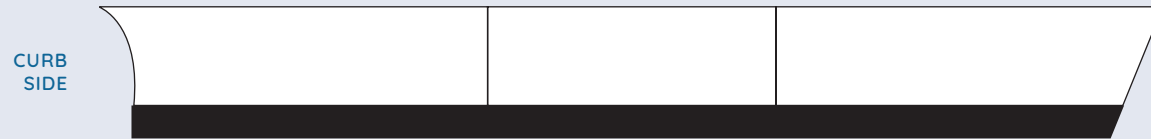
Identifying the Difference Between HD and FLEET	10
--	----

200 SERIES



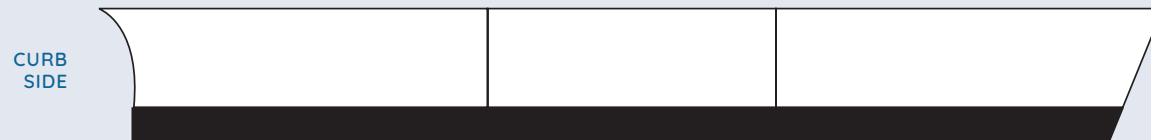
204000

Standard Skirt
Steel Composite Panel
223 LBS.

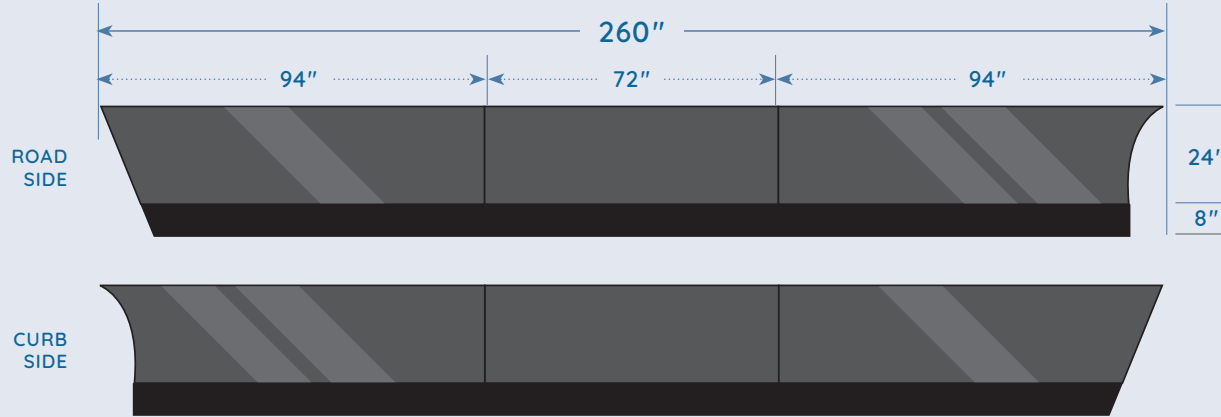


214000

For Trailers with Cross-members on 10" Centers
Steel Composite Panel
223 LBS.

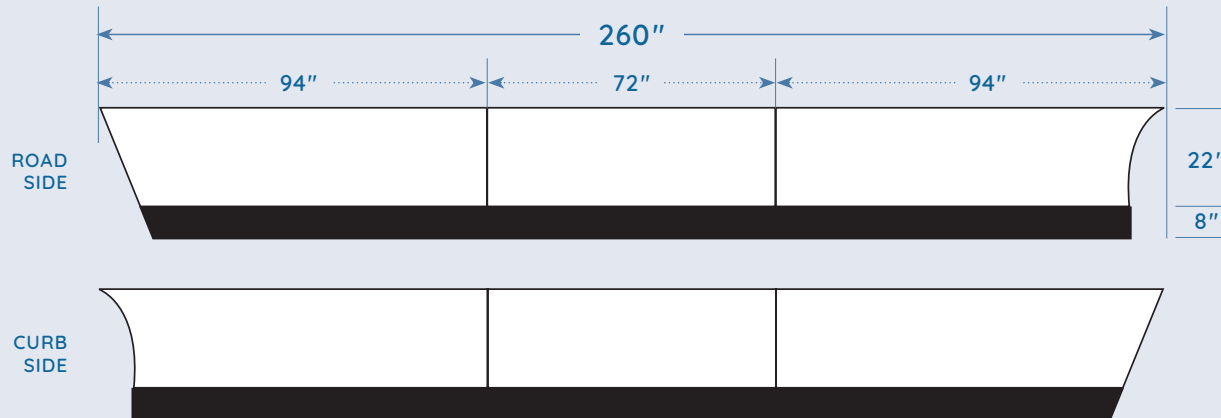


200 SERIES



204000BLK

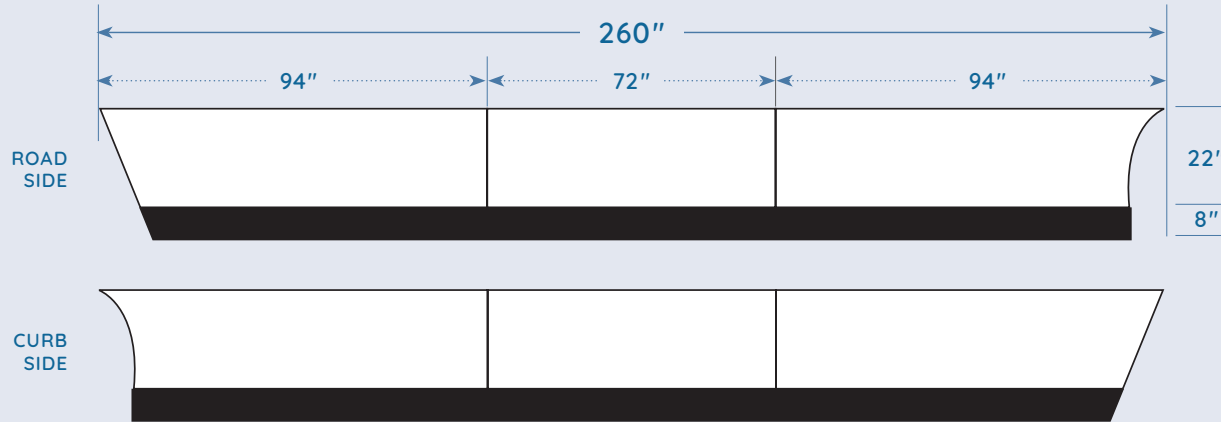
Standard Skirt with Black Panels
Steel Composite Panel
223 LBS.



205000A

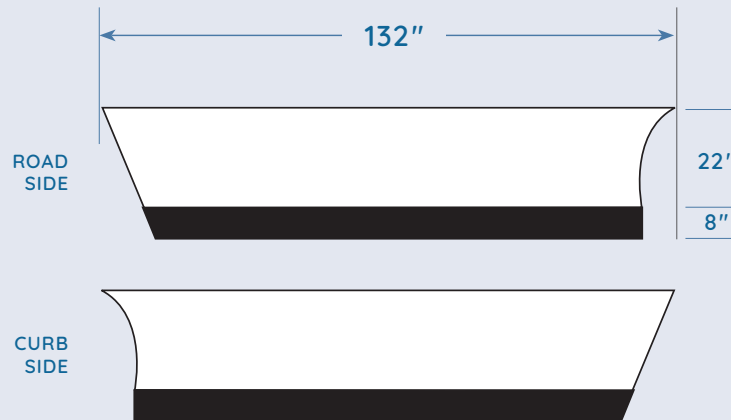
Aluminum Composite Panel
(Narrower Upper Panels, Wider Upper Skirt)
181 LBS.

200 SERIES



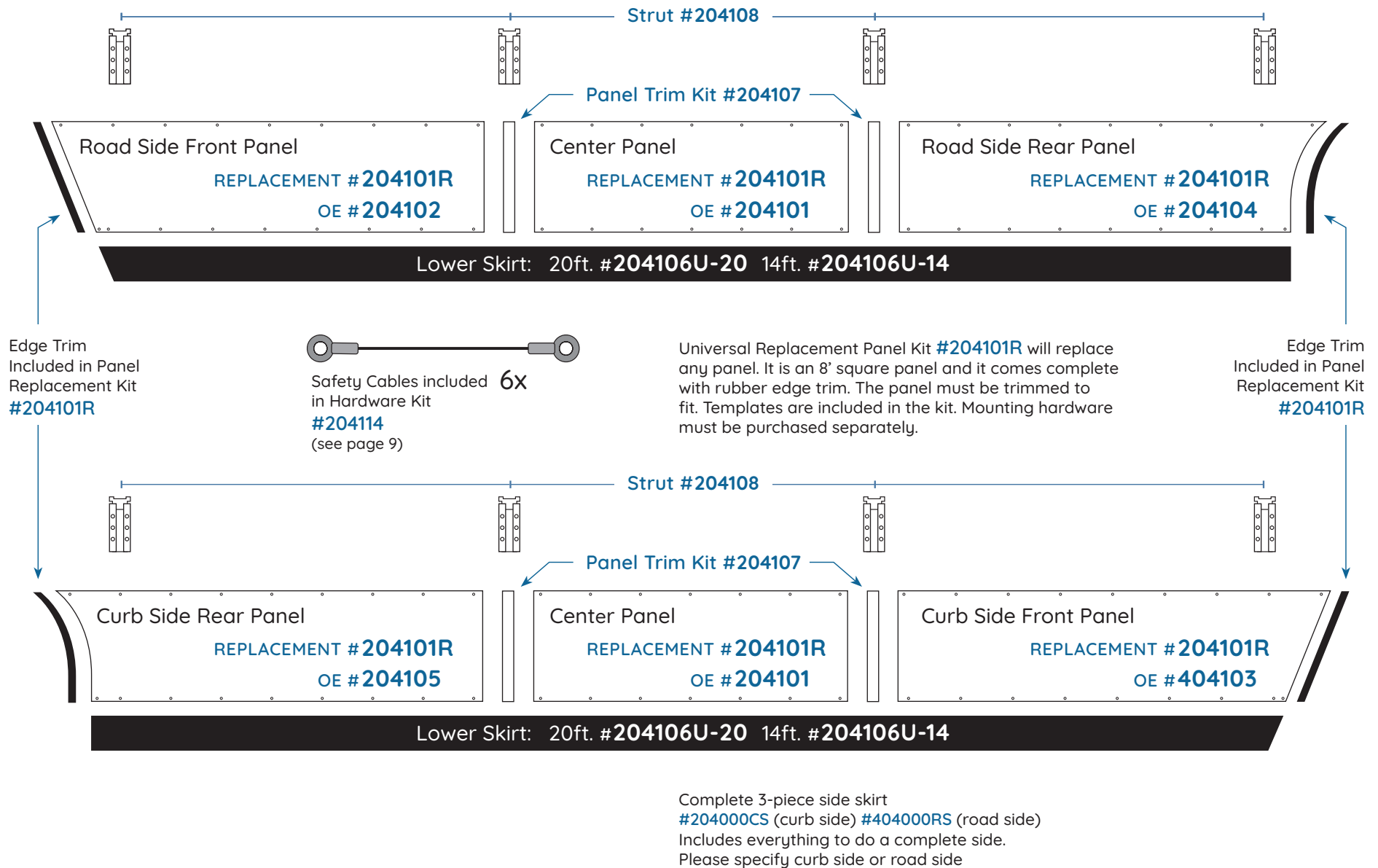
205000

Steel Composite Panel
(Narrower Upper Panels, Wider Upper Skirt)
213 LBS.

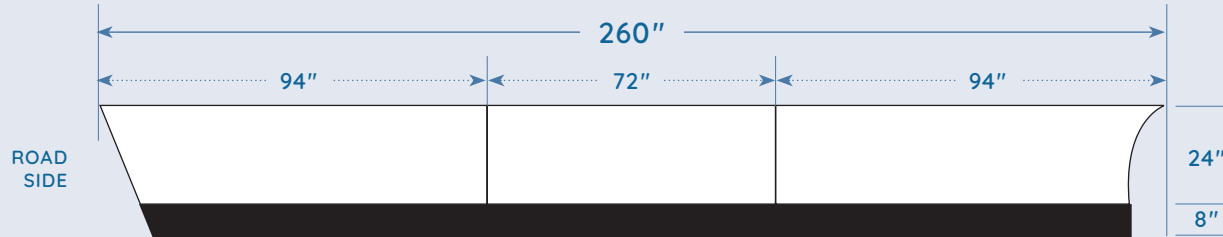


206000

For Pup Trailers
Steel Composite Panel
(Single Piece Panel)
119 LBS.

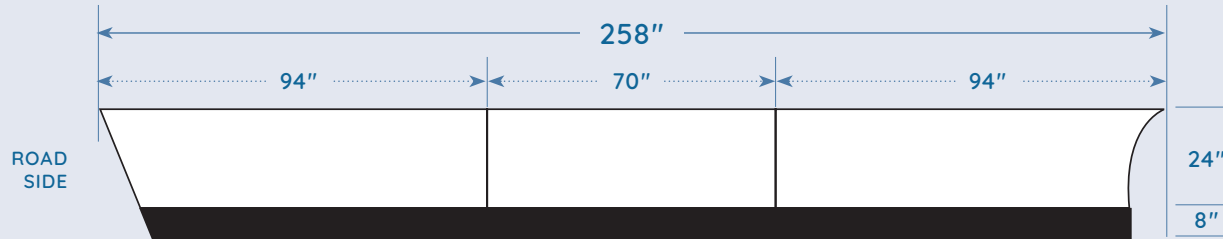
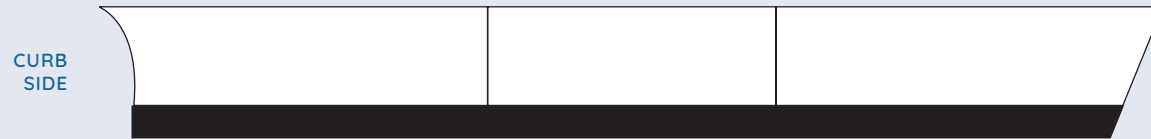


400 SERIES



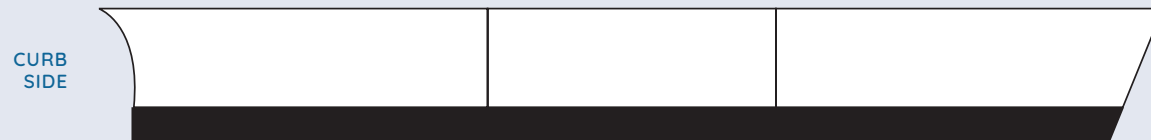
404000

Standard Skirt
Steel Composite Panel
223 LBS.

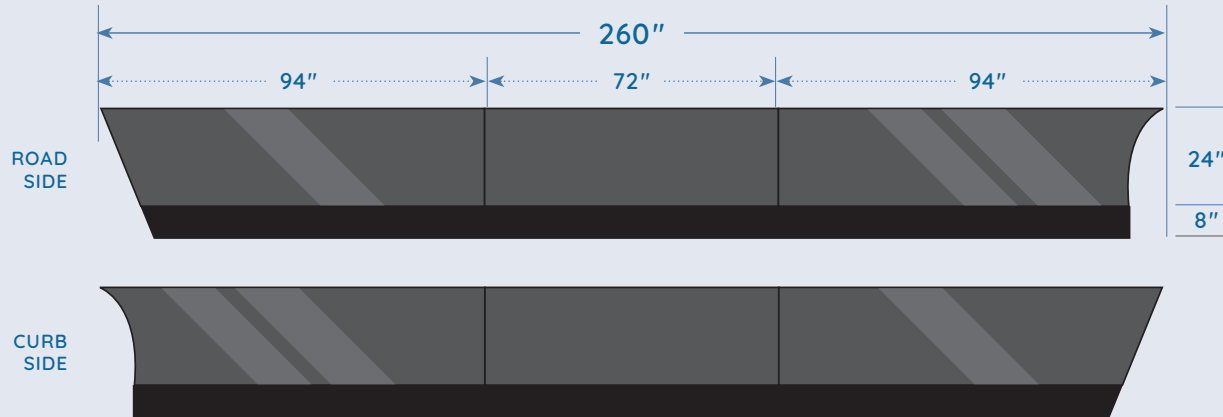


414000

For Trailers with Cross-members on 10" Centers
Steel Composite Panel
223 LBS.

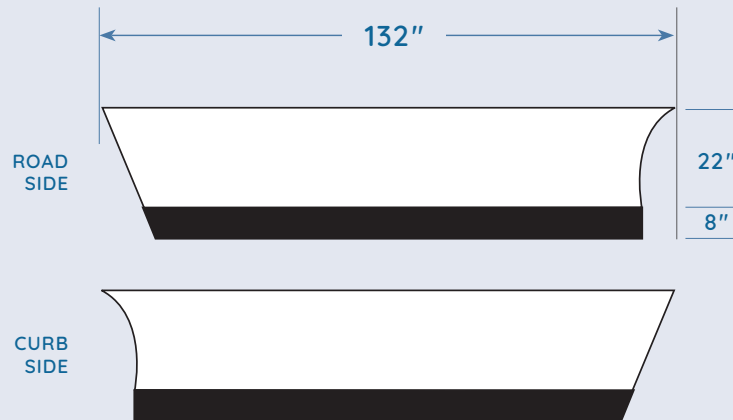


400 SERIES



404000BLK

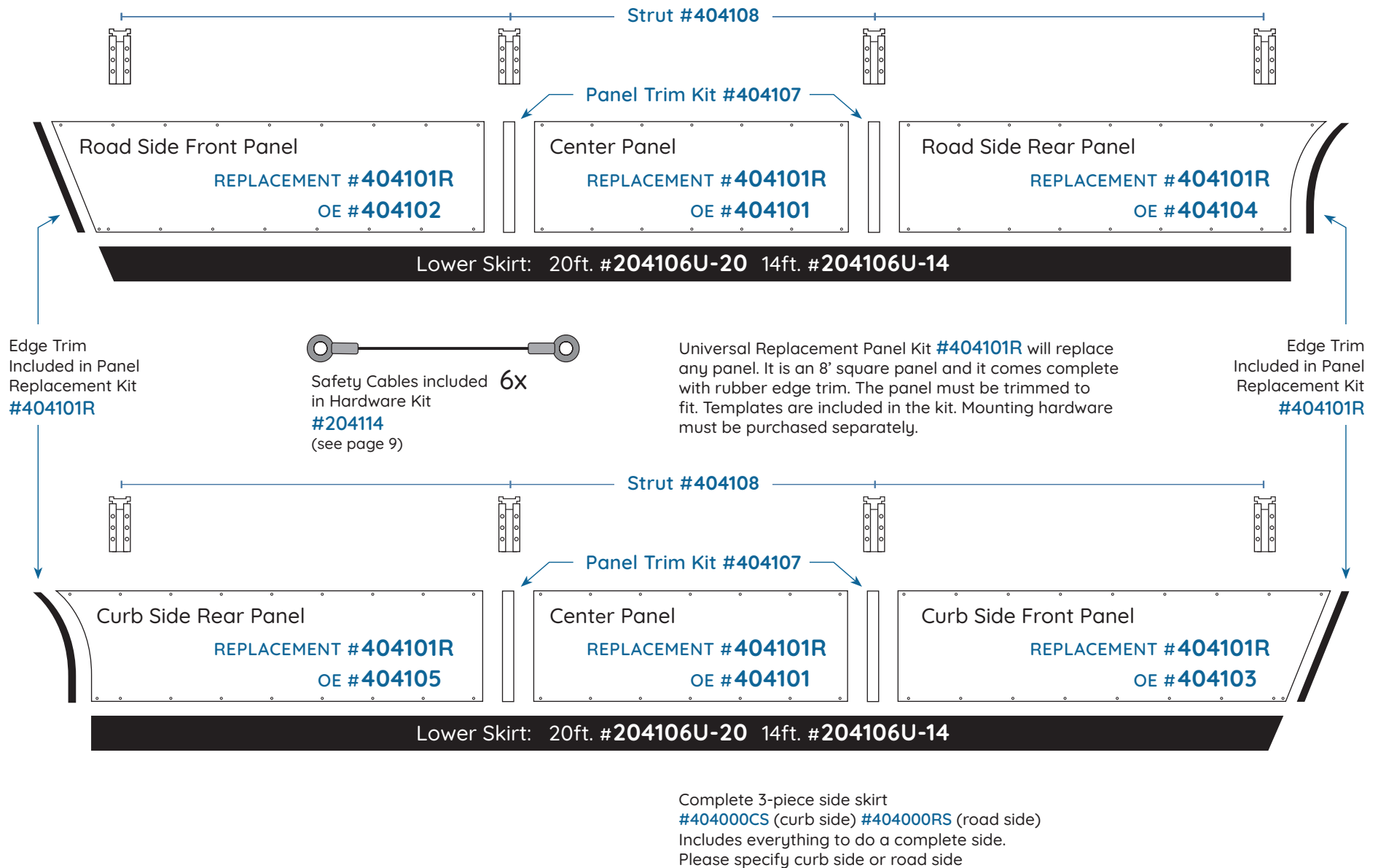
Standard Skirt with Black Panels
Steel Composite Panel
223 LBS.



406000

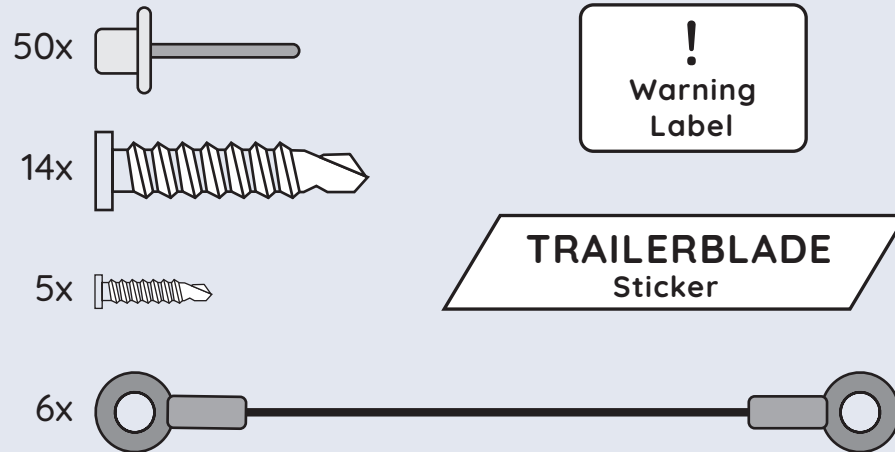
For Pup Trailers
Steel Composite Panel
(Single Piece Panel)
119 LBS.

400 SERIES PARTS DIAGRAM



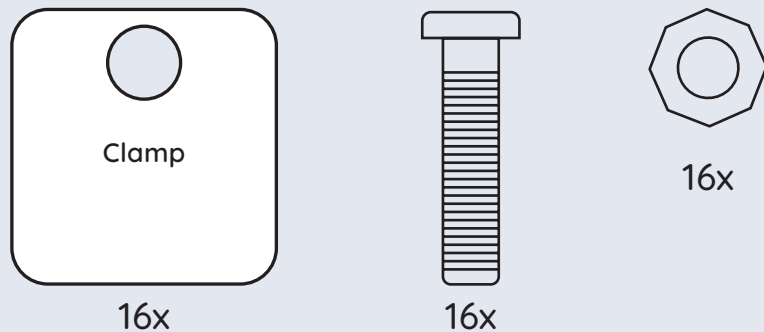
Replacement Parts and Hardware

HARDWARE KIT | UPPER PANEL | **PART #204114**

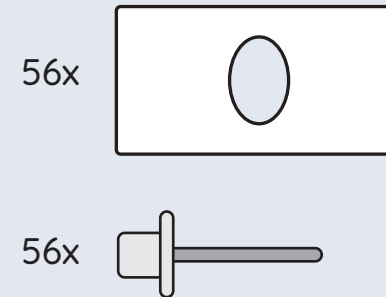


POST ACCESSORIES KIT | **PART #404117**

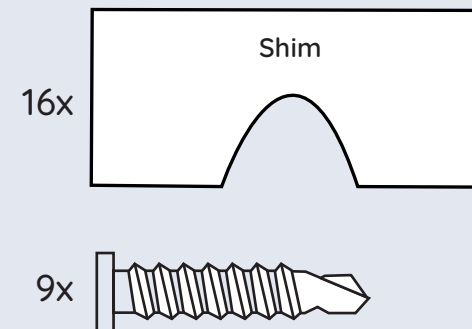
Included with Strut



HARDWARE KIT | LOWER RUBBER SKIRT | **PART #204115**



HARDWARE KIT | STRUTS | **PART #204116**

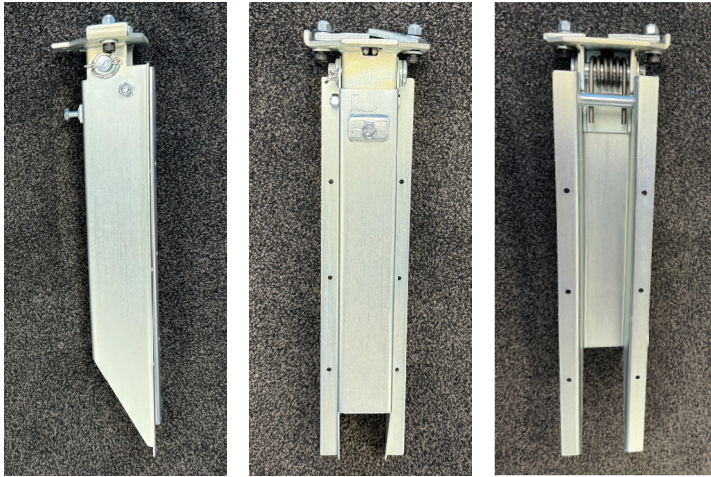


COMPLETE HARDWARE KIT | INCLUDES ALL THE ABOVE
PART #204112

Identifying the Difference Between HD and FLEET

HD

STEEL STRUT



LOWER SKIRT (RUBBER)



FLEET

POLYSTRUT



LOWER SKIRT (RUBBER)

